

# 5. Les bateaux à voiles blanches (Musette)

Violine I

Musette für Orchester nach der Musette für Klavier aus dem Piano Book

Joachim Johow

**Vivace** A 



5

12

20

28

36

44 **Fine**

50 B  **divisi**

57

65

73

78 **D.S**

Violine II 5. Les bateaux à voiles blanches (Musette)

Musette für Orchester nach der Musette für Klavier aus dem Piano Book

Vivace

Joachim Johow

5

A

12

20

29

37

45

Fine 1.

51

2.

B

58

66

74

79

D.S

divisi

divisi

divisi

Viola

# 5. Les bateaux à voiles blanches (Musette)

Musette für Orchester nach der Musette für Klavier aus dem Piano Book

Joachim Johow

Vivace

Measures 1-6 of the Viola part. The key signature is one sharp (F#) and the time signature is 3/4. The music begins with a treble clef and a sharp sign. The first six measures contain a melodic line with eighth and quarter notes, including a slur over measures 2-4.

7 **A**

Measures 7-14. Measure 7 is the start of a first ending section marked 'A' with a repeat sign. The music continues with eighth and quarter notes, ending with a slur over measures 13-14.

15

Measures 15-22. The melodic line continues with eighth and quarter notes, featuring a slur over measures 21-22.

23

Measures 23-31. The melodic line continues with eighth and quarter notes, featuring a slur over measures 29-31.

32

Measures 32-40. The melodic line continues with eighth and quarter notes.

41

Measures 41-48. The melodic line continues with eighth and quarter notes, featuring a slur over measures 45-48.

49 **Fine** 1. 2. **B**

Measures 49-56. Measure 49 is the start of a first ending section marked 'B' with a repeat sign. The first ending (1.) ends with a double bar line. The second ending (2.) continues the melodic line with eighth and quarter notes.

57

Measures 57-65. The melodic line continues with eighth and quarter notes.

66

Measures 66-74. The melodic line continues with eighth and quarter notes, featuring slurs over measures 70-71, 72-73, and 74.

75 **D.S**

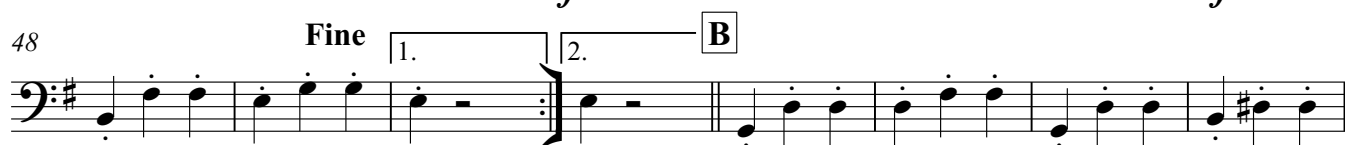
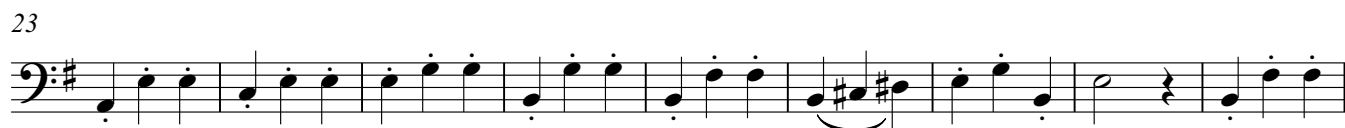
Measures 75-82. The melodic line continues with eighth and quarter notes, ending with a double bar line. The marking 'D.S' (Da Capo) is placed above the final measure.

# Violoncello 5. Les bateaux à voiles blanches (Musette)

Musette für Orchester nach der Musette für Klavier aus dem Piano Book

Vivace

Joachim Johow



# Kontrabass 5. Les bateaux à voiles blanches (Musette)

Musette für Orchester nach der Musette für Klavier aus dem Piano Book

Joachim Johow

Vivace

2

7

7

18

18

29

40

Fine 1.

51

2. B

62

72

79

D.S

# 5. Les bateaux à voiles blanches (Musette)

Klavier

Musette für Orchester nach der Musette für Klavier aus dem Piano Book

Joachim Johow

Vivace

Measures 1-6 of the piece. The music is in 3/4 time with a key signature of one sharp (F#). The bass clef part features a rhythmic accompaniment of eighth and sixteenth notes, while the treble clef part has rests.

Measures 7-13. Measure 7 is marked with a box containing 'A' and a repeat sign. The treble clef part has a melodic line with slurs, and the bass clef part continues with chords and eighth notes.

Measures 14-21. The treble clef part has a more active melodic line with slurs and ties, while the bass clef part provides harmonic support with chords and eighth notes.

Measures 22-28. The treble clef part features a melodic line with slurs and ties, and the bass clef part continues with a steady accompaniment of chords and eighth notes.

Measures 29-35. The treble clef part has a melodic line with slurs and ties, and the bass clef part continues with a steady accompaniment of chords and eighth notes.

Measures 36-42. The treble clef part has a melodic line with slurs and ties, and the bass clef part continues with a steady accompaniment of chords and eighth notes.

Fine

44

50

1. 2. **B**

57

65

*Red.*

71

77

80

**D.S**